



# Chipembele News Dec 2009

Dear All,

As we approach the end of 2009 we would like to extend our sincerest thanks to our supporters from all around the world, without whose help all none of our projects would have been possible. We have had a very successful year, despite financial constraints, and look forward to 2010 with great optimism. We wish you all a very Happy New Year!

## The President of Zambia visits Chipembele

We were honoured with a Presidential visit to Chipembele on 26<sup>th</sup> December. His Excellency Rupiah Banda, the President of Zambia, was having his usual Christmas break with his family for a week in South Luangwa and we received a call on Boxing Day morning to say he would be arriving by helicopter in the afternoon. After a mad sweep around and a tidy up we suddenly heard the distinctive whirr of chopper blades - fortunately everything was just about in place ready to receive him! He arrived with a number of officials including the British High Commissioner to Zambia, Thomas Carter and his wife, the Minister of Tourism, Hon. Catherine Namugala, the ZAWA Warden and some community elders.



*The Presidential party arrives at Chipembele*

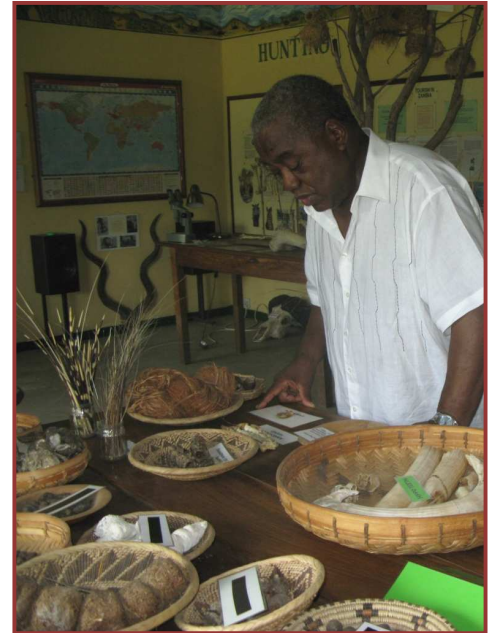
The President is a very easy man to get along with, so it was all much relaxed, with no pomp and circumstance. He showed great interest in our wildlife education centre and many of the natural history exhibits it holds. The First Lady didn't attend this time as she had visited over Christmas in 2008, but did send a Christmas card from them both and 3 large bags of lollipops for the pupils who come to the Centre, which was very thoughtful of her.

The President wrote in our Visitors Book, *"We really learnt a lot and enjoyed seeing the work that is being done for our kids and people. God's blessing."*





*Steve explains the complexities of giraffe leg joints*



*The President examines a lion's claw*

## **New project vehicle funded by Estelle Trust**

After 11 years of tough use on Zambian rural roads and tracks, the old green Land Rover 130 that we had brought out second hand from the UK in 1998 finally became economically unviable to run. It was forever breaking down and costing a fortune on spares and repairs. We were in urgent need of a general project vehicle and were thrilled when the Estelle Trust in the UK came to our rescue and funded the majority of the cost of a brand new Toyota Land Cruiser. It is used to run all the Chipembele projects, particularly those in the local schools and community and is helping everything to operate so much more efficiently, smoothly and safely.



*Sincerest thanks from us all at Chipembele in Zambia go to the Estelle Trust for coming to our assistance when we needed it most and to Chipembele Trust, UK for facilitating it all.*



## School tree planting competition

Lisa, our volunteer Schools Project Manager, ran a tree planting competition amongst the 6 schools that attend Chipembele. She teamed up with Christopher Gondwe, the local Forestry Officer, to give talks and advice on tree planting before the competition was launched. Members of the Chongololo Club



from Mfuwe Middle Basic School were the winners. Despite very real African hazards such as excessive heat, nibbling chickens and even passing elephants, they were successful in rearing a large number of both indigenous and exotic trees which will later be transplanted to the school grounds. In addition to growing the best seedlings, the pupils showed initiative, planning, organisation and teamwork. Prizes were awarded and the projects are being encouraged to keep going for a second round of judging in 2010.

## Bambi and Honey, Coco and Nzombo



*Molly adopts Bambi as her latest baby*

In November we took two baby orphaned vervet monkeys (Ebony and Nzombo) and two orphaned baby bushbucks (Bambi and Honey) into our care. Thankfully our two young Jack Russell dogs simply love them all and all the animals get on extremely well with lots of licks and shared grooming.

Ebony was orphaned after his mother was killed by local children when she came into their village to steal their mangoes. He stayed in a tree all alone screaming for a day and a night until a boy snatched him from a branch and snapped his femur in two.

Fortunately he didn't seem to be in any pain so we decided against splinting it and just let it mend itself... which amazingly it did and he has regained full mobility. Bambi had an injured eye (it was almost completely white with a corneal ulcer) and a badly cut and infected ear but after a few weeks of medical treatment he also recovered totally and both he and Honey have been released from their cage. They still return to the house every day for milk but will gradually rehabilitate themselves to a wild life.



Sadly Ruby, the brave 'mama warthog', and one of her babies were taken by a pride of 5 lions over the Christmas period, leaving three 2-month old babies with their four 1-year old siblings alone to fend for themselves. We are hoping the remainder of the family can survive without their mother.



*Ebony and Nzombo are constant companions*



*Feeding time at dusk and everyone wants in on the milk!*

## Chipembele Inter Schools Wildlife Quiz

In October 2009 we held the 7<sup>th</sup> annual Chipembele Inter Schools Wildlife Quiz at Yosefe Basic School. Teams of four represented the Chongololo and Conservation clubs from each of the 6 schools that had attended Chipembele throughout the year and many of the questions and exhibits that were shown were based on what they had learnt. Prizes and certificates were awarded in a Junior and Senior section, and Pupil of the Year Awards made to each school.



*Concentration is intense amongst the teams as the questions are read out!*



*Pupils of the Year and the Club Patron of the Year receive certificates and prizes*



## Game Drives for Pupils



Children living in the South Luangwa area mostly ever only see crop-raiding animals such as monkeys, elephants, hippos and bush pigs. They therefore often only have a negative view of animals and perceive them as problems. Most have never been inside the National Park, so by taking them on game drives they are able to see the vast array of animals that it holds and learn the value of wildlife in terms of economy, jobs, ecology and aesthetics. In doing so it is hoped they are able to appreciate animals more fully and in doing so want to protect them rather than trouble them.

*Pupils from Kakumbi Middle Basic School watch a large pride of lions close-up, most of them seeing lions for the first time in their lives*

Game drives are an important part of the Chipembele syllabus each year but funding for the trips is needed. £40 (or \$60) will cover the cost of fuel, snacks and drinks for 20 pupils and 2 teachers from a local school. If you would like to assist in funding a game drive in the dry season of 2010 (April to October) please send an e-mail to [info@chipembele.org](mailto:info@chipembele.org).

*Thank you!*



*Pupils enjoy a picnic in the Park*

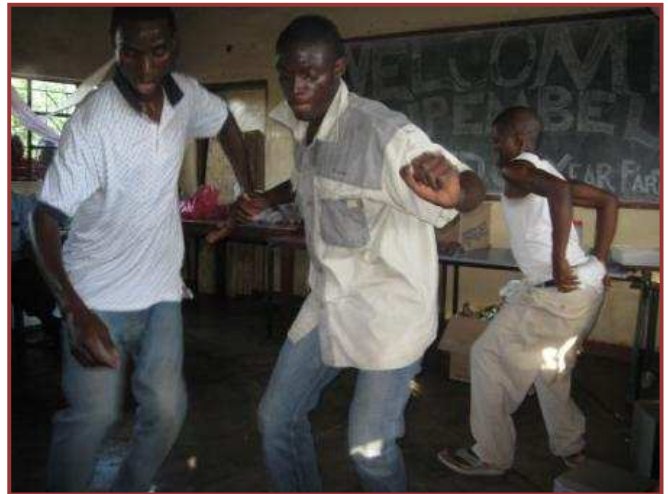
## End of year party for Chipembele sponsored pupils

Thanks to a generous donation from Anne Cooper, a long term supporter of Chipembele and sponsor of several pupils over the years, we were able to hold an end of year party for our 98 sponsored pupils. There was plenty of food and soft drinks, a DJ made sure there was non-stop music, and dancing competitions were held for both junior and senior pupils. A team of judges (Anna, Lisa, two teachers and the school admin assistant) watched in amazement at the skill of some of the pupils. We also belly laughed until we cried at some of the movements.





*Junior finalists warm up...*



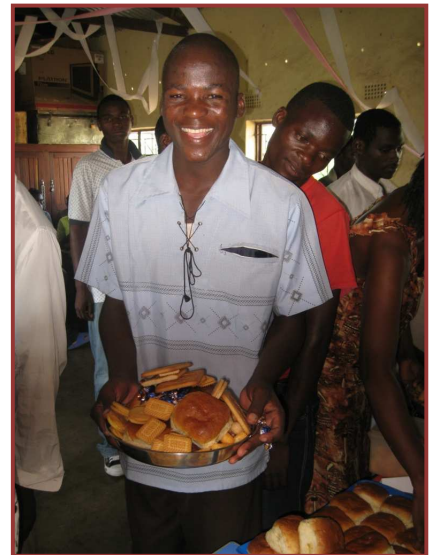
*.... and the senior pupils really get into the groove!*

All of the pupils are orphan and come from poor and/or vulnerable backgrounds so a party with buffet food and lots of music and dancing was appreciated greatly. The feedback was tremendous, so much so that we can see it becoming an annual event!

Lisa has been teaching a Grade 11 sponsored pupil, Wisdom Moyo, how to use a computer and within a week he had learnt the basics. He typed out his first ever letter in appreciation of the party and in it he wrote:

*“... Coming to the food which was there, it was enjoyable to every pupil who witnessed the party, as everyone went home with that happiness to say ‘I am really from a party’. Those who participated in dancing competition went home very happy as they won different prizes as they participated.*

*In contribution to what happened yesterday I would say it is a good idea to have such activities because it is the same activities which will be forcing us pupils to work extra hard so that we are not removed from sponsorship and continue enjoying some parties which will be held...”*



*Happiness is... filling your plate with as much food as you possibly can!*



## A time for Thank Yous!

Thanks to a number of generous donations in the last quarter of 2009 we were able to complete a number of projects in the local schools including the renovation of the grass roof at Victory Community School, the purchase of a heavy duty photocopier and a large quantity of text and reference books for the library at Chiwawatala Middle Basic School, and purchase a large quantity of text books for Kakumbi Middle Basic School.

We also extend huge appreciation to Jude and Kaye for their boundless enthusiasm in the day to day support of Chipembele and for setting up the Chipembele Facebook fan club.

<http://www.facebook.com/ChipembeleWildlife>

**Our sincerest thanks for particularly generous donations in the last quarter of 2009 go to:**

**Len Davies (UK)**

**Greg Horner (UK)**

**Alison and Malcolm Percy (UK)**

**Jude Price and Kaye Brown (Australia)**

**The Elmo Foundation (US)**

**Ros Waddams (Norway)**

**Cambridge Capital Group Trust (UK)**

Finally we would like to thank everyone who has donated to Chipembele over the past year. It is all greatly appreciated. We couldn't achieve any of it without you. We really value your support, especially all your e-mails. Wishing you all the best of health, much happiness and success in all you do in 2010,

*Anna and Steve*

**Chipembele Wildlife Education Trust is a Zambian registered charitable trust, reg. no. 41317.  
It is supported by Chipembele Trust, a registered UK charity, no. 1107698.  
*Chipembele... teaching Zambian children the value of wildlife***

### **Contact**

**Steve and Anna Tolan  
Directors and Founding Trustees  
Chipembele Wildlife Education Trust**

**email: [info@chipembele.org](mailto:info@chipembele.org)  
web: <http://www.chipembele.org>  
phone: ++-260-(21)6-246108**



If you would like to unsubscribe to this newsletter, please send a blank e-mail titled 'Unsubscribe newsletter' to the following address:

[info@chipembele.org](mailto:info@chipembele.org)

Generously sponsored in 2009 by:



Member Society of:

